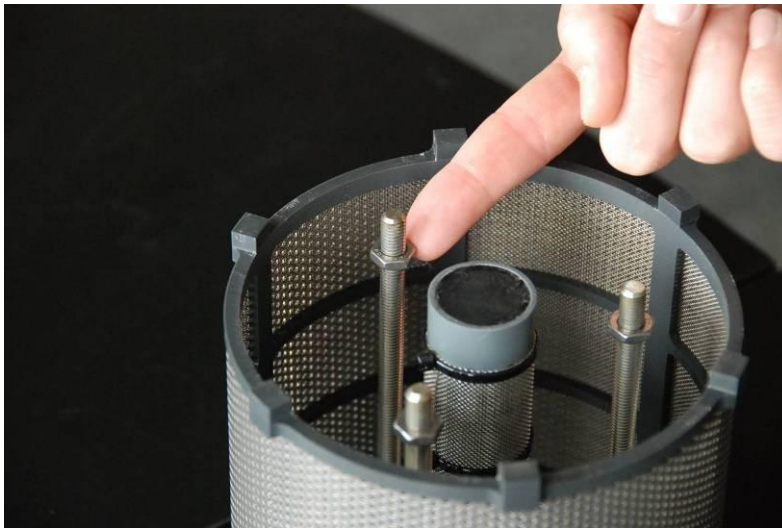


How to use the dual radial scrubber



All the parts that come with the dual radial scrubber: on the left top a complete assembled radial, and an extension tube, next to it the long cover retaining screw, the PU washer, cover, 3 screws, 1 small O-ring, 2 big O-rings and 3 springs and the second extension tube.



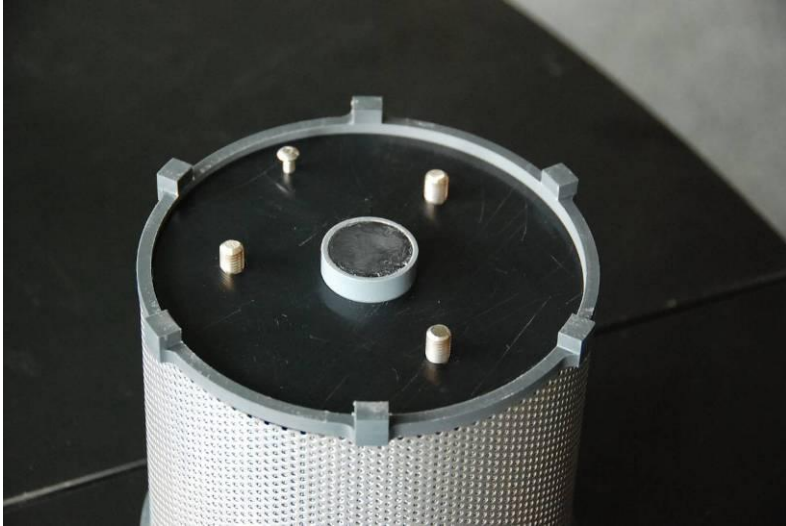
On each bar a screw is mounted: the only function of this screw is to prevent the cover to fall in too deep, when mounted and no sorb in the canister. **Only make sure that during use the screws are always below the surface of the sorb, so that the cover can come down with the spring tension, when tapping the canister, and settling of the sorb, and that the cover does not rest on these screws and allow a tunnel/open area be formed under the cover.**



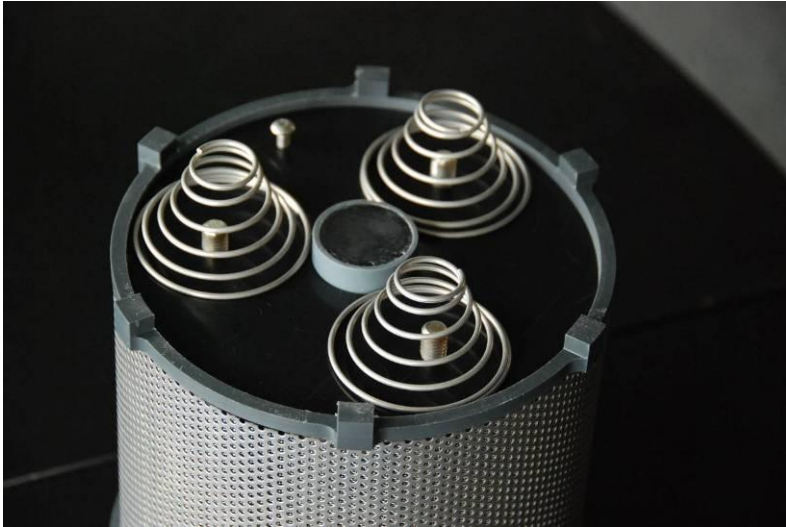
The small O-ring is mounted in the groove of the canister. This O-ring prevents bypass of exhaled gas by the sides of the canister.



Just for showing, but of course this washer is placed on top of the sorb, to prevent bypass from gas coming from the central tube, and going directly trough the small opening of the cover to the inhale side.



After filling, you put the cover in place,...



... then the 3 springs, and then you close the cover with the 3 cover screws.



The 2 big O-rings are installed on the extension tubes, just like on the rEvo.
Use some grease on them, so that the rebreather lid slides down easily.



When filling the radial canister, this is done in 3 times: first you fill up the canister to 1/3 of the height, and tap gently with the canister on all sides around,...



... until you see that the sorb is settled a bit, and equally divided over the whole surface area.



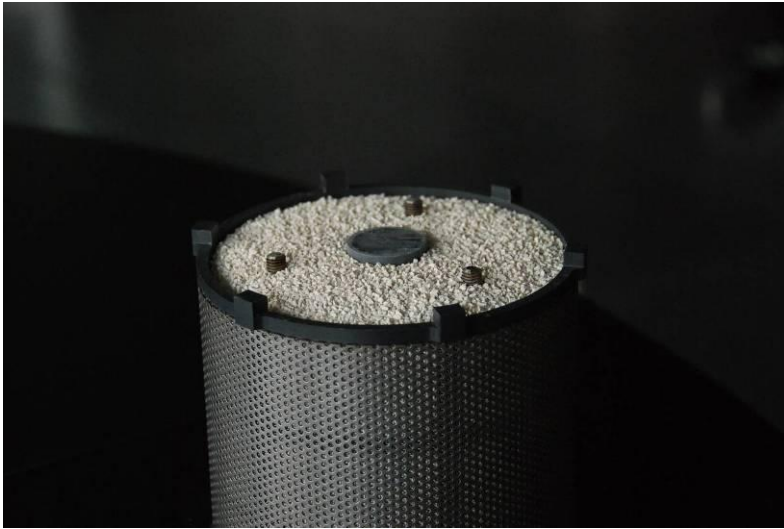
Do this by tapping a bit on all sides of the canister.



Then add more sorb so that the canister is filled +/- 2/3, tap again equally on all sides for half a minute, until settled, and then...



... fill up the canister fully: when gently tapped the sorb will settle down...



... just below the surface of the canister, and the bars become visible a few millimetres.



Now put the plastic washer in place,...



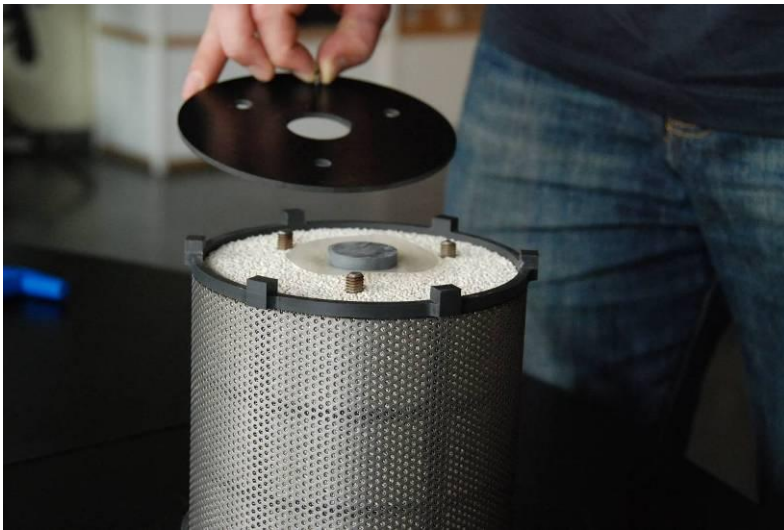
... put the cover on it, and tap a bit more while pressing the cover down.



Now install the 3 springs and the cover screws, and tap a gently until the edge of the cover is at exactly the same height as the side of the canister. This is the correct filling volume of the radial canister.



To remove the cover easy for refilling,



.... a small bolt is fixed to the cover.



Now install the extension tubes on the rebreather (if necessary grease the O-rings)...



Put the canisters in the unit, always with the central opening and the O-ring on the topside, and press them down.



When installed correctly, the canister comes at the same height as the extension ring.



If you have to take out the radial canister, just put your 2 fingers in the central opening, and lift the canister out.



Be sure to mark each of the canisters correctly, so that you know which to put on top.



Now close the unit,...



... and put the long covers crew in place.

When using softlime fine grade, in normal relaxed diving, we advise to do a 'cycle', a partial sorb exchange (taking out the top canister, putting the bottom canister on top, and filling up the removed canister with fresh sorb and putting this fresh sorb in the bottom position) every 4 hours of diving, or exchanging all the sorb after 6 hours of diving. (see the rEvo manual for further info)